

# Contents

Acknowledgements, References & Orientation .....	5
Introduction .....	6
911 model identification. ....	7
Identification label. ....	9
VIN (vehicle identification number) ..	11
Model or type number. ....	16
Country codes .....	20
Other identification label-related codes .....	22
Exterior Porsche 911 paint codes .....	24
‘M’ (‘I’) series options .....	35
Porsche <i>Exclusiv</i> options .....	57
Interior colour codes .....	71
Production data .....	90
Index .....	96

# 911 model identification

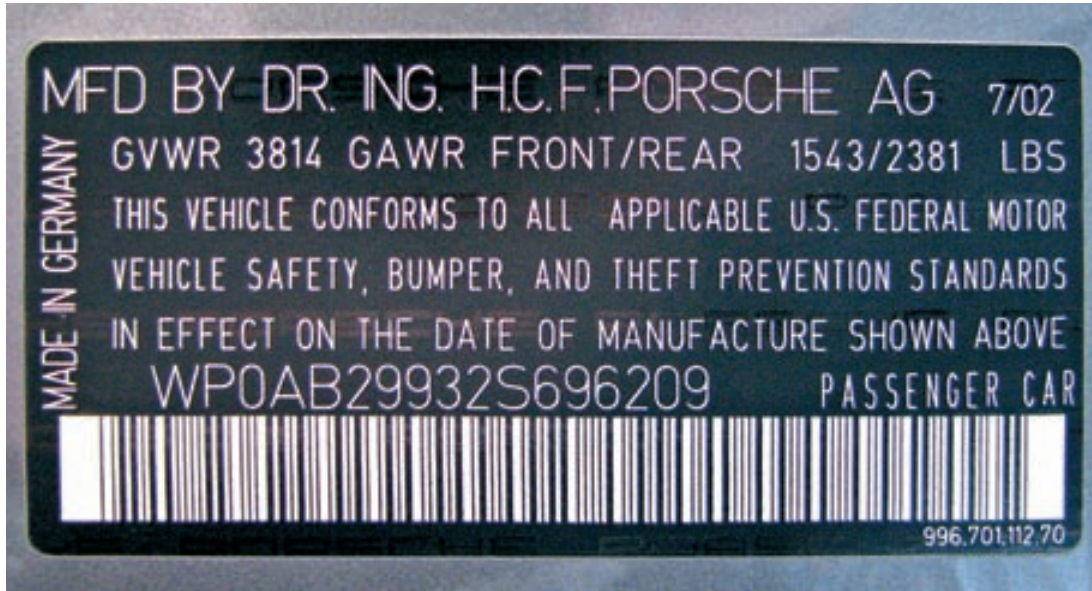
Throughout a 911 there are various forms of identification plates and labels depending on the market version, and the country the 911 was exported to. For the 996 series the identification marking locations were standardised, and for the first time all market models had the VIN plate installed behind the windscreen (windshield) on the lower left side. However, for the purpose of this book, only the identification and the paint code labels will be covered in depth.



Many different 911 series lined up, but how is it possible to positively identify each by type?



The engine lid script helps, but can be unreliable ...



... the VIN reduces the field, but only for US market models ...

## VIN (vehicle identification number)

The VIN or vehicle identification number is required for all official paperwork, but provides little useful information to the owner past the fact that it identifies the market version (RoW or USA), basic body style (Coupé, Targa, Cabriolet), basic model of engine installed (normally aspirated or turbocharged), model year of production and serial number. However, knowing what the seventeen digits of the VIN represent is part of the overall Porsche 911 identification picture so has been included.

**Note:** *The basic VIN structure is an international standard and remains unchanged since it was introduced to the Porsche manufacturing system in 1981. Some use of various digits is flexible and Porsche has always taken advantage of this. It's also very important to understand that the 3rd digit of any Porsche VIN since 1981 is the number zero (0) not the letter O.*



964 series RoW  
market version VIN  
data plate.

# Model or type number

The model or type number identifies the body style of each 911 model within a series as well as any special significant features such as all-wheel-drive. The model or type code should be checked before any 911 is purchased to ensure it's genuine.

## 964 series

- Carrera 4 Coupé 964-130
- Carrera 4 Coupé RHD 964-131
- Carrera 4 Coupé C03 964-140 (California only)
- Carrera 4 Coupé Turbo Look USA 964-150
- 911 Anniversary C4 964-150
- 911 Anniversary C4 RHD 964-151
- Carrera 2 Coupé 964-330 and Carrera Cup US edition
- Carrera 2 Coupé RHD 964-331
- Carrera 2 Coupé C03 964-340 (California only)
- Carrera 4 Targa 964-230
- Carrera 4 Targa RHD 964-231
- Carrera 4 Targa C03 964-240 (California only)
- RS America 964-320
- Carrera RS and Carrera RS 3.8 964-360
- Carrera RS Touring RHD 964-361
- Carrera 2 Targa 964-430
- Carrera 2 Targa RHD 964-431
- Carrera 2 Targa C03 964-440 (California only)
- Carrera 4 Cabriolet 964-530
- Carrera 4 Cabriolet RHD 964-531



Two 964s lead this 911 line-up in Interlaken, Switzerland.



Standard model type 964-330, 964 Carrera 2 Coupé.



Model or type number location, which is the same for all 911 models from model year 1982.

## Exterior Porsche 911 paint codes

The exterior paint code can be found in two different locations in all 911s built from 1989 to 2005. The first location is on the identification label, which just provides the basic paint code. The second is the paint code label itself where the paint code, paint brochure code (depending on market requirements at the time) and the colour description are stamped either in German or in English and German.

From model year 1991, Porsche AG introduced water-based paints to provide what is known as the 'pearl effect' in the special order metallic paints. In model year 1994 a water-based set of standard paints was introduced providing a deeper look in the paint and a reduction in the oxidation issues, especially with Guards red.

**Note:** Brochure codes have not been provided because they are not used to identify paint in the parts catalogue.

**Note:** As the 911 ages the paint fades. Using the original paint on a naturally faded base will result in a patchy effect, which is very noticeable under certain light conditions. One tip is to check the Mercedes range of paints for touch up purposes or even individual panel painting. The Mercedes shades, of very similar colours, are lighter than the original Porsche shade, and provide a better match in some circumstances.

**Paint code label location, 964 series.**



- 40W Vesuvio grey metallic
- 554 Mirage metallic
- 744\* Black metallic
- 746 Black metallic
- 83W Wimbledon green metallic
- 84R Arena red metallic
- 84S\* Arena red metallic
- 92E Polar silver metallic
- 92M Polar silver metallic
- 92T Arctic silver metallic
- 9898 Special order colour from a previous Porsche series
- 9999 Special order colour with paint sample supplied by customer

\* = water-based pearl effect paint

## Model years 1998 to 2005

In the 996 series the paint code label is installed in the left lower side of the luggage compartment, behind the luggage compartment carpet covered trim panel, which has to be removed to gain access.



Paint code label installed in a 996 GT-2.