

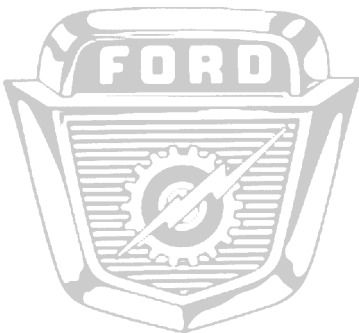
**F100**  
**F150**

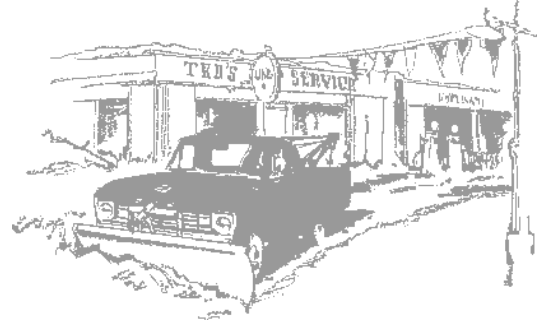
*"America's Best-selling Truck"*



CONTENTS

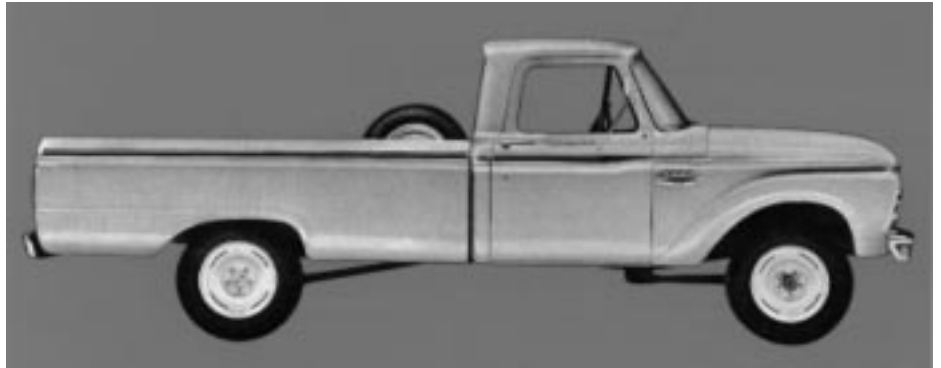
Acknowledgements .....	4
Introduction .....	6
Chapter 1 1953-1956.....	8
Chapter 2 1957-1960.....	15
Chapter 3 1961-1966.....	25
Chapter 4 1967-1972.....	42
Chapter 5 1973-1979.....	59
Colour Gallery .....	81
Chapter 6 1980-1986.....	105
Chapter 7 1987-1996.....	128
Chapter 8 1997.....	141
Chapter 9 Restoring & driving the early F100 .....	148
Index .....	157





time Yellow, Caribbean Turquoise, Marlin Blue, Acadian Blue, Wimbledon White, Pure White and Chrome Yellow. The two-tone option was offered in any combination of color except Pure White and Chrome Yellow with Wimbledon White. Carried over from 1965 was the Deluxe two-tone option for all Styleside models.

The 4-wheel drive models were priced \$718 above equivalent 2-wheel drive models. Purchase of the 300cu. in. 6-cylinder engine added \$93; the 352 V-8 was priced at \$128 above the equivalent model with the 240 6-cylinder engine.



4x4 major specifications (1966)

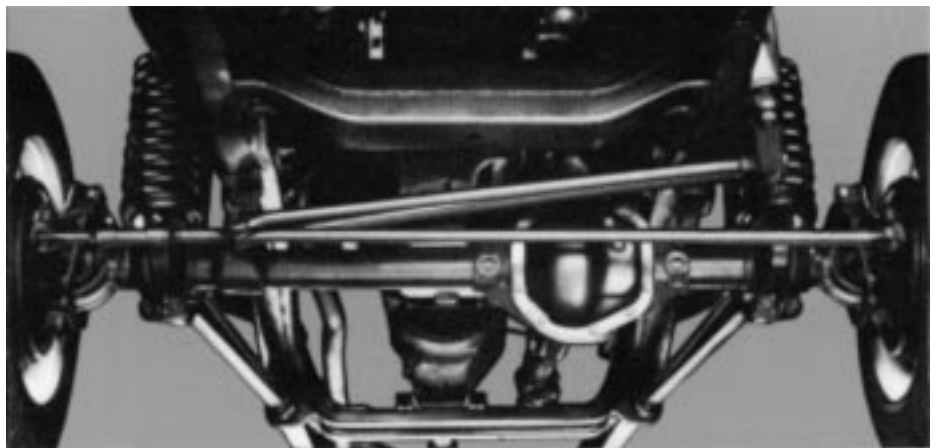
Standard GVW rating:	5600lb.
Front axle capacity:	3000lb.
Rear axle capacity:	3300lb.
Axle ratio:	3.70 (6-cyl.), 3.50 (V-8)
Clutch:	Heavy-duty, 11.0in.
Frictional area:	123.7sq. in.
Frame section modulus:	3.71 (115in. wb.), 4.14 (129in. wb.)
Front spring capacity (at pad):	1125lb. (6-cyl.), 1250lb. (V-8)
Rear spring capacity (at pad):	1250lb.
Transfer case:	Dana single speed
Transmission:	4-speed, New Process 435

*Both the F-100 Styleside and Flareside 4x4 models had a lower profile for 1966. (Courtesy Ford Motor Company)*

*The 1966 F-100 4x4 was equipped with a new "Mono Beam" front suspension. (Courtesy Ford Motor Company)*

F-100 pickup prices (1966)

<i>115in. wheelbase:</i>	
Flareside:	\$2069
Styleside:	\$2085
<i>129in. wheelbase:</i>	
Flareside:	\$2105
Styleside:	\$2121



Production totals (1967)

Flareside pickups:	18,307
Styleside pickups:	204,710
4x4 Flareside pickups:	481
4x4 Styleside pickups:	3,455

Prices of F-100 pickups\* with standard 6-cylinder engine (1967)

Flareside, 6.5ft. box:	\$2198
Styleside, 6.5ft. box:	\$2237
Flareside, 8ft. box:	\$2237
Styleside, 8ft. box:	\$2273

\*Add \$651 for 4-wheel drive.

Standard exterior colors for 1968 were Rangoon Red, Pebble Beige, Raven Black, Meadowlark Yellow, Holly Green, Lunar Green, Sky View Blue, Harbor Blue, Wimbledon White, Chrome White and Pure White. The same two-tone variations offered in 1967 were available.

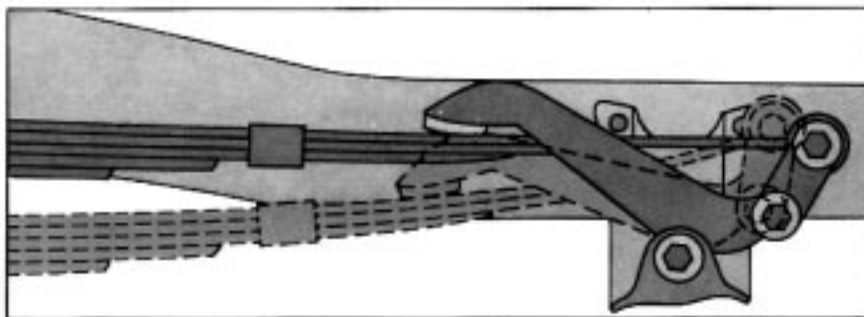
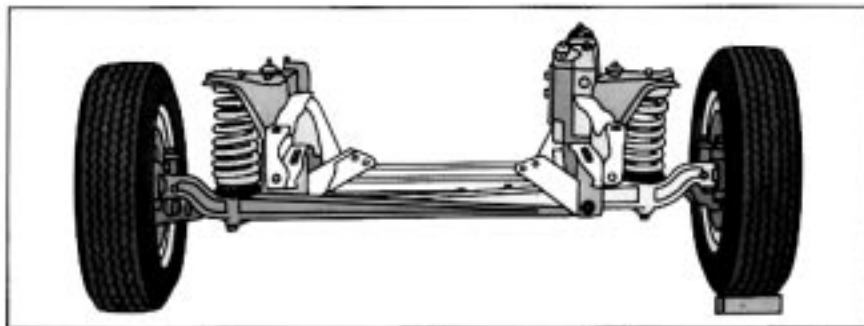
Introduced for the 1969 F-100 were Contractor Special, Heavy-Duty Special and Farm & Ranch Special models. The Contractor Special was offered in two forms: Package No.1 contained heavy-duty front and rear springs, rear step bumper, convenience group (included cargo area light, courtesy light door switches, inside day/

V-8 engine specifications (1968)

	360 V-8	390 V-8
Bore x stroke:	4.05in. x 3.50in.	4.05in. x 3.78in.
Gross horsepower:	215 at 4400rpm	255 at 4400rpm
Net horsepower:	179 at 4000rpm	190 at 4000rpm
Gross torque (lb./ft.):	327 at 2600rpm	376 at 2600rpm
Net torque (lb./ft.):	302 at 2900rpm	324 at 2000rpm
Compression ratio:	8.4:1	8.6:1
Carburetion:	single 2-bbl.	single 2-bbl.



*This 1968 F-100 Styleside with the Ranger option looks far too nice for yeoman duty at a construction site. (Courtesy Ford Motor Company)*



Prices of F-100 pickups\* with standard 6-cylinder engine (1968)

Flareside, 6.5ft. box:	\$2318
Styleside, 6.5ft. box:	\$2357
Flareside, 8ft. box:	\$2357
Styleside, 8ft. box:	\$2393

\*Add \$647 for 4-wheel drive. The Ranger option added another \$238.

night mirror and engine compartment light), dual chrome Western swing-lock mirrors, contractor box on both sides with key-lock fold-down doors and a "Contractor Special" insignia on the cowl side.

The Contractor Package No. 2 added an underhood Electric Power Pak to the above equipment.

The Farm & Ranch Special option contained heavy-duty battery, alternator

*A sketch of the optional Flex-O-Matic rear suspension for the 1968 F-100 showing loaded and unloaded positions. (Courtesy Ford Motor Company)*



*Changes made in the 1971 Ranger XLT interior included a repositioned woodtone door panel and revised upholstery pattern.  
(Courtesy Ford Motor Company)*

nor styling changes and several new and revised options characterized the 1972 F-100. The grille's argent-colored insert retained its two-piece format with a polished aluminum divider creating a field of four rectangular elements. Added to all trim levels was a color-keyed center seat belt.

Six new exterior colors, three of them metallic, were included in a selection of sixteen colors for 1972. Fourteen colors could be combined in three different two-tone paint schemes (Regular, Deluxe and Combination) that Ford offered for the F-100.

Carried over from 1971 were Bahama Blue, Swiss Aqua, Mallard Green, Calypso Coral, Prairie Yellow, Tampico Yellow, Wim-

bledon White, Candyapple Red, Chrome Yellow and Pure White. The new colors were Seapine Green Metallic, Winter Green, Royal Maroon, Wind Blue, Bay Roc Blue Metallic and Sequoia Brown Metallic. The three two-tone combinations were once again available with 54 regular combinations possible.

Engine emission control equipment was added to all engines. The various Gross Vehicle Weight packages now included equipment required for specific ratings. The 4x2 F-100 had a higher GVW of 5500 pounds, up from 5000 pounds in 1971. The overdrive option was deleted for 1972. A new Northland Special option consisted of an engine block heater, 50/50 anti-

freeze coolant, 70amp-hr battery, 55amp alternator and a limited slip rear axle. Another new offering, the Protection Package, combined front bumper guards with door edge guards. Initially, power-assisted brakes were listed as standard for the 4-wheel drive F-100, but, on October 1 1971, Ford informed its dealers that they were now optional. F-100 4x4 models had a new standard Dana 3300lb. rated front axle. This axle's capacity was 300lbs. more than the unit used in 1971. It also had longer wearing, impact-resistant, tapered roller bearings in the steering knuckles.

**FORD**

**LIGHT DUTY TRUCKS**  
SERIES F-100 • F-250 • F-350



**Boldly modern styling ...  
modern through and through!**

For '57 and the years ahead, **FORD TRUCKS COST LESS ...**  
*less to own ... less to run ... last longer, too!*

*A 1957 F-100 Styleline with 6.5 foot box and Custom Cab option. (Courtesy Ford Motor Company)*